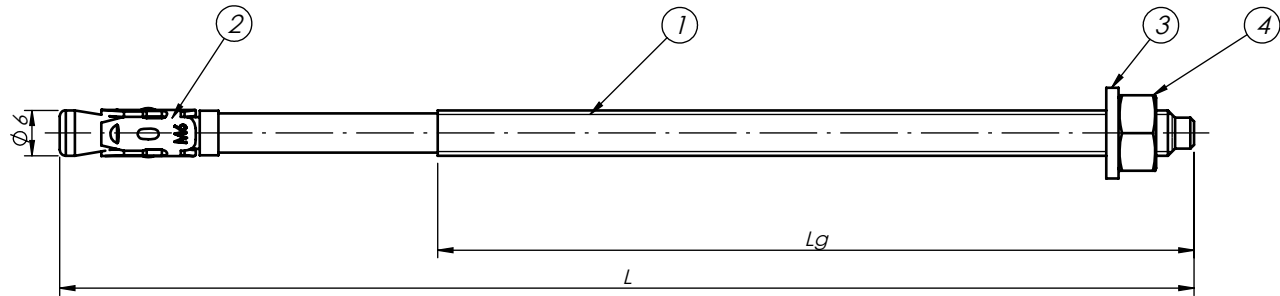


Index	Name	L [mm]	Lg [mm]	Weight [g]
	PBK M6x40	40	15	10,6
	PBK M6x45	45	20	11,7
3720605	PBK M6x50	50	25	12,81
	PBK M6x55	55	30	13,91
	PBK M6x60	60	35	15,01
37206065	PBK M6x65	65	40	16,12
	PBK M6x70	70	45	17,22
	PBK M6x75	75	50	18,32
	PBK M6x80	80	55	19,42
37206085	PBK M6x85	85	60	20,53
	PBK M6x90	90	65	21,63
	PBK M6x95	95	70	22,73
3720610	PBK M6x100	100	75	23,83
	PBK M6x105	105	80	24,94
	PBK M6x110	110	85	26,04
	PBK M6x115	115	90	27,14
	PBK M6x120	120	95	28,24
	PBK M6x125	125	100	29,35
	PBK M6x130	130	100	30,18
	PBK M6x135	135	100	31
	PBK M6x140	140	100	31,83
	PBK M6x145	145	100	32,66
	PBK M6x150	150	100	33,49
	PBK M6x155	155	100	34,32
	PBK M6x160	160	100	35,15
	PBK M6x165	165	100	35,97
	PBK M6x170	170	100	36,8
	PBK M6x175	175	100	37,63
	PBK M6x180	180	100	38,46

This document is the absolute property of DOMAX Sp. z o.o. This document must not be copied without the written permission of DOMAX Sp. z o.o. The contents thereof must not be disclosed to a third party nor be used for any unauthorized purpose. Contravention will be prosecuted.

Revision				
Rev.	Explanation	Date	Revised by	Approved by



Note:

1. General tolerances EN 22768 mK.

4	1	Nut	M6-5 DIN 934	Carbon steel	2,0 [g]
3	1	Washer	M6 DIN 125	Carbon steel	1,0 [g]
2	1	Mechanical fastener - plate	PBK M6-B	Carbon steel	0,97[g]
1	1	Mechanical fastener M6-rod	PBK M6-P	Carbon steel	-
Pos.	No.	Name	Description	Material	Weight

Design	D.Kozłowski		Checked	-	Approved	-	Note	-
Drawn	D.Kozłowski		Format	A4	Scale	1:1	Material	-
Index	16.10.2023	Date		Mechanical fastener M6		Weight		-
		PBK M6		Sheet		1 / 1		
DOMAX Sp. z o.o.		Rev		0				